

# API PRO FLEXIBLE MAINTENANCE SOLUTIONS

Increased User Satisfaction with the New API PRO Xa

- More dynamic user interface
- New role-based navigation
- Faster operation
- Enhanced user-friendliness
- Improved reporting
- Short learning curve
- Easy to update from earlier API PRO versions

### A Pleasure to Use

Xa is the new version of API PRO. Xa stands for Extended Appearance and you only need a glimpse of the new version to see the improvements we have made.

You may be happy with your previous version of API PRO – but Xa takes you to the next level!

And this has been confirmed by existing API PRO users. Test users have testified to its enhanced functionality and ease-of-use. The more you work with Xa, the more you will come to like it.

### Role-based Navigation

Xa lets you to set up alternative API PRO desktops for different purposes.

Simply define your own default desktop containing your favourite functions. Then, using the navigation pane in the “My API PRO” section, you can quickly swap from one desktop to another.

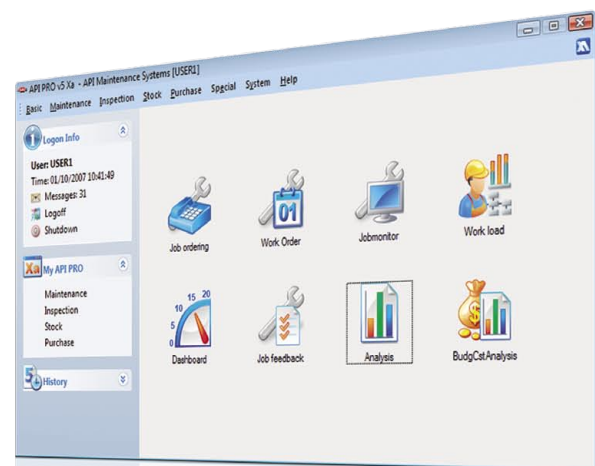
The desktop can be based on icons or flow charts. With the flow chart desktop, simply click the appropriate icon to see that step in the business process.

The picture below shows a flow chart related to maintenance. You can make your own flow charts and connect them to the desired system functionality.

You can also define some functions to start automatically each time you log in (for example, your personal dashboard, showing your need-to-know Key Performance Indicators (KPIs).



You can set up flow chart based desktops with links to system functions



The new API PRO navigation systems

### Improved Speed and Ease-of-use

Much of the functionality in API PRO Xa is unchanged, ensuring existing users can upgrade without any training. And the newly optimised central tools increase the speed of operation, making it a more pleasurable working experience.

### The Job Monitor

The Job Monitor and the Job Accumulation functions are central to the daily handling of maintenance jobs. And these programs have now been improved, offering greater functionality. The new Job Monitor combines new optics with clear graphical symbols for status and urgency, including machine stop and line stop.

What's more the Job Monitor can now show the long description of the job directly on the primary screen.

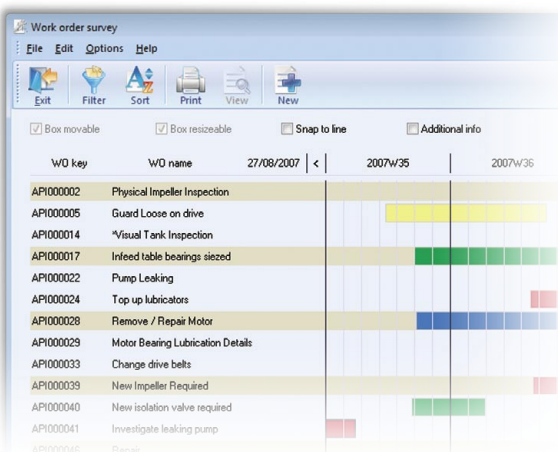
Stop	P	IPG	Order date	Work order key	Root MO/Position	Maintenance object
1	!	!	09-09-2007 15:22:42	API000307	COARSE	CP02
					excessive leakage from S gland.	
2	!!	!	10-10-2007 10:25:41	API000340	101	101-01
					Long description of what is wrong with the machine	
			19-09-2007 13:14:11	API000059	101	101-02
1		!	12-09-2007 21:24:49	API000056	101	101-03
1	!	!	14-10-2007 15:21:27	API000306	FINE	CP01
					Thrust bearing still noisy after adjustment and lubrication	
2	!	!	25-08-2007 14:20:45	API000028	Dumfries	
2	!	!	26-08-2007 11:32:21	API000126	101	101-02
2	!	!	28-08-2007 10:25:43	API000250	101-06	101-06P
2	!	!	31-08-2007 12:28:12	API000080	101	101-02
2	!	!	09-09-2007 10:21:08	API000114	101	101-01
2	!	!	12-10-2007 11:06:32	API000016	101-06	101-06P
	!	!	22-08-2007 20:17:11	API000010	Factory Two	
	!	!	14-09-2007 20:50:07	API000046		M067-2

The new Job Monitor

### The Job Survey

The Gantt chart for interactive maintenance planning has been greatly improved and now has full screen scalability, and advanced and easy-to-use zoom functions.

A simple zoom-in and zoom-out function allows you to see how jobs are scheduled in the days, weeks, months and years ahead. Jobs can be changed by drag and drop, ensuring availability problems can be checked and solved – fast.



The Gantt chart for interactive maintenance planning

### Accumulation of Purchase Needs

In the Accumulation of Purchase Needs program you can now open or close the needs per supplier directly in the browser. This means you can work quicker, more safely and more comfortably. Selected material is converted to price enquiries or purchase orders in a smooth working process..

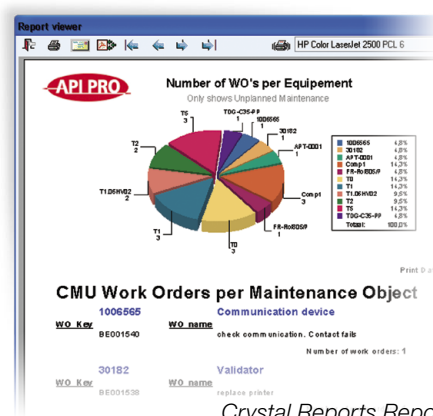
Type number	Name	Quantity	Price Unit
Supplier: Not defined   #Lines: 6   Value: 261,67 GBP			
B7263832	Cutter Blades	18,00	5,000 EACH
S882738	Outer Sealing Ring	2,00	45,000 EACH
G100100	Scanpump Impeller Gaskets ...	1,00	12,340 EACH
D727619	Z400 Drive Belts	1,00	32,000 EACH
C600602	Motor Fan Cover	3,00	1,110 EACH
B7263832	Cutter Blades	1,00	34,000 EACH
Supplier: B837 Birmingham Bearings   #Lines: 1   Value: 105,40 GBP			
C600600	Bearing 6205 2RS	10,00	12,400 EACH
Supplier: BE001 Bearing Services limited   #Lines: 1   Value: 168,81 GBP			
C600702			

The new API PRO Purchase Accumulation tool

### Improved Printouts and Reporting

Crystal Reports® is now the main reporting tool for API PRO. Users can make advanced reports with an intelligent combination of graphics and figures. In addition, Crystal Reports-based reports are now implemented as an integrated part of API PRO, replacing older report layouts. The XML-based form gives even better customisation of Job Cards, Inspection Lists, Purchase Orders, etc.

The use of Crystal Reports contributes to Xa's much more modern look and feel, allowing you to present your KPIs in a more attractive and user-friendly way.



Crystal Reports Report

### Upgrade to Xa Now – Free!

With a more dynamic look and feel, and improved functionality, Xa will optimise your working processes at every level. And every screen uses the same basic way of working as the old version of API PRO, so very little user training is required when updating to Xa.

And for API PRO customers with a valid maintenance contract, upgrading to Xa is simple and free!

API Maintenance Systems - Head Office  
Roskildevej 342 B, st.  
2630 Taastrup  
Denmark  
Tel: +45 43 48 99 00  
Fax: +45 43 48 99 01  
E-mail: sales@apipro.com  
Web: www.apipro.com

API Poland  
Wisniowy Business Park  
Ilzecka 26  
02-135 Warszawa  
Poland  
Tel.: +48 225 757 308  
Fax: +48 222 111 689  
E-mail: poland@apipro.com  
Web: www.apipro.com/pl

API Sweden  
Fridkullagatan 14  
412 62 Göteborg  
Sweden  
Tel: +46 (0) 31-707 45 45  
Fax: +46 (0) 31-707 39 95  
E-mail: sweden@apipro.com  
Web: www.apipro.com/se

API Germany  
Mainberger Strasse 36  
97422 Schweinfurt  
Germany  
Tel: +49 (0) 9721 79681 400  
Fax: +49 (0) 9721 79681 415  
E-mail: germany@apipro.de  
Web: www.apipro.com/de

API Belgium  
Jozef Van Elewijckstraat 103/3  
B-1853 Strombeek-Bever  
Belgium  
Tel: +32 (0) 2 270 4053  
Fax: +32 (0) 2 270 4055  
E-mail: belgium@apipro.com  
Web: www.apipro.com/be/nl

API China  
Room 710, Block 10  
No. 1988 of Gonghe xin Road  
Daning Internation Business Plaza  
Shanghai 200072  
China  
Tel.: +86 21 33870336  
Fax: +86 21 33870337  
E-Mail: china@apipro.com  
Web: www.apipro.com/cn

API Maintenance Systems develops, markets and supports the API PRO maintenance management software (CMMS) world-wide. API PRO is Europe's leading maintenance system and is used by many leading companies in a variety of industries and organizations to maintain high-value capital assets such as plants, facilities and equipment.

[www.apipro.com](http://www.apipro.com)



– for more information