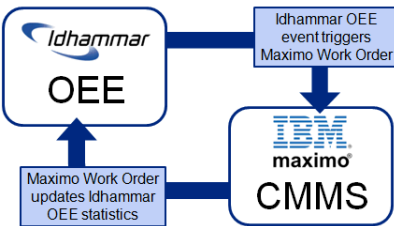
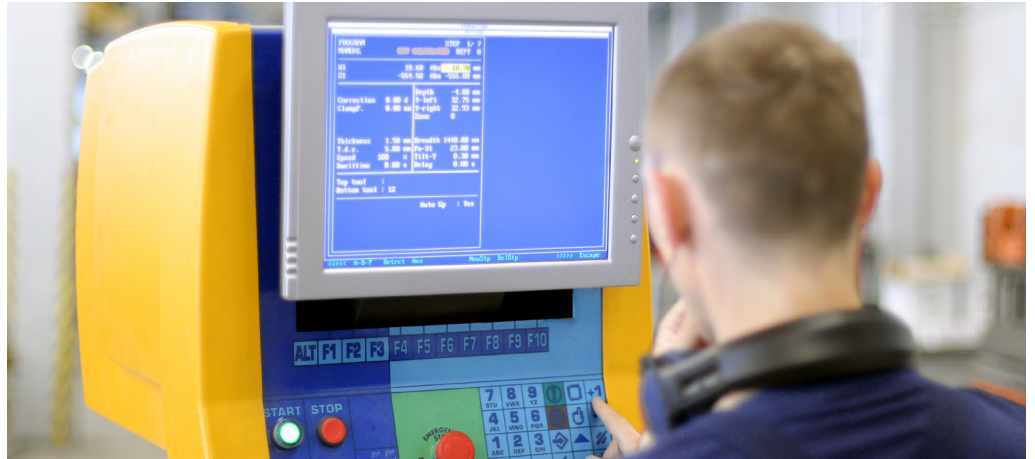


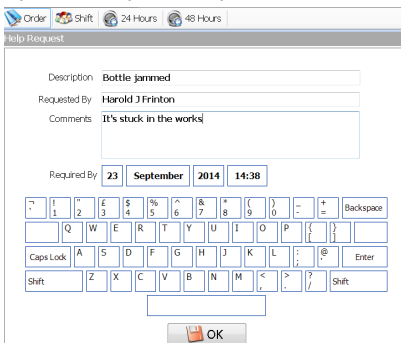
# Idhammar OEE & IBM Maximo - seamless integration with IBM Maximo Asset Management Software



## SAVING TIME, IMPROVING VISIBILITY AND TRACEABILITY to manufacturing performance and asset maintenance procedures.

Idhammar OEE is the software application that will deliver efficiency improvements in the manufacturing process whilst IBM Maximo has been designed to deliver efficiency improvements in the asset maintenance process. The integration of Idhammar OEE and IBM Maximo software enables efficient communication and prioritisation of maintenance action to improve the efficiency of both spheres of operation. In today's competitive climate lean is essential. Line stoppages have to be addressed as a matter of urgency. Idhammar OEE Maximo integration allows the operator to call an engineer without leaving the line. Critical information relating to the stoppage reason and operator comments can be passed to Maximo to allow for quick response and diagnosis.

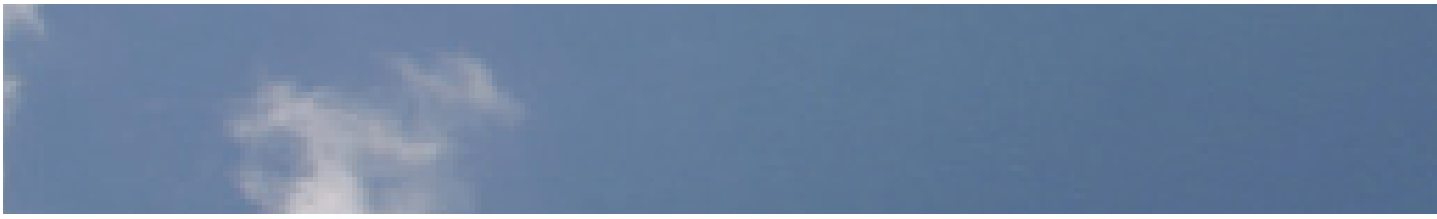
### Operator requests help



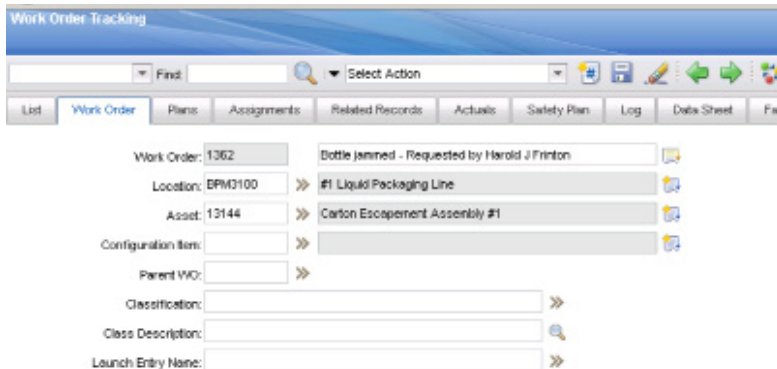
Deploying the Idhammar OEE Maximo interface will assist in the delivery of those strategic benefits sought by all manufactures; reduced downtime, increased productivity and reduced cost per product. Idhammar believes that these high level aims will not be delivered unless line side staff are fully engaged. The Idhammar OEE Maximo interface will reduce frustrations and increase commitment by providing operator friendly functionality including:

- Prioritisation of OEE stoppage events requiring maintenance action
- OEE Stoppage events linked to Work Orders in Maximo Asset Management
- Visual status and completion details available in Idhammar OEE via interface
- Automatic communication via interface improves process and cost efficiency
- Reduction in downtime and increase in overall efficiency
- Improve visibility of tracked and traced maintenance actions requested and completed

These benefits are achieved quickly and efficiently by using the Idhammar OEE Maximo interface to immediately request help from maintenance; a Maximo Work Order is automatically created when an Idhammar OEE request is dispatched, the Maximo Work Order reference is returned to the operator, and the status of the request is updated on receipt of a Maximo completion message.

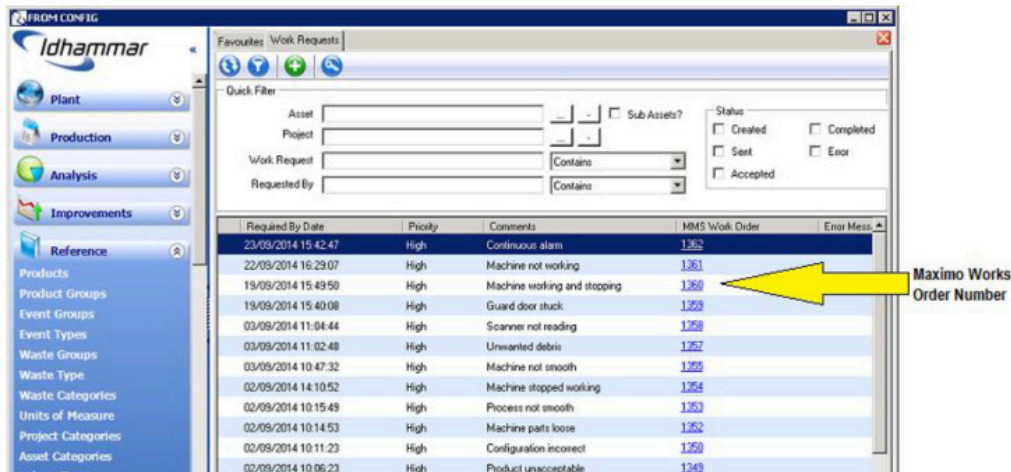


Maximo WIO processed automatically

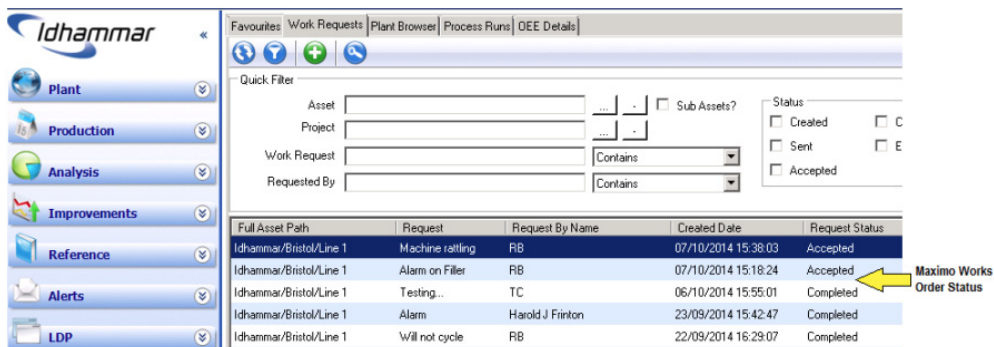


When the maintenance action has been taken and the Maximo Work Order has been completed the interface will automatically record completion. Using the Idhammar OEE interface will reduce downtime and increase the overall efficiency of the manufacturing process.

Operator gets WIO confirmation



Completion registered



The Idhammar OEE software together with the Idhammar OEE - Maximo interface enables businesses to achieve substantial operational benefits and drive continuous improvement to the bottom line.

Call: +44 (0)117 9209400  
Email: [info@idhammarsystems.com](mailto:info@idhammarsystems.com) or  
Visit: [www.idhammarsystems.com](http://www.idhammarsystems.com)

Copyright © 2014 Idhammar Systems Ltd.  
All rights reserved. November 2014

Or [click here](#) to learn about the exciting Idhammar Systems Partner Program and register your interest.

