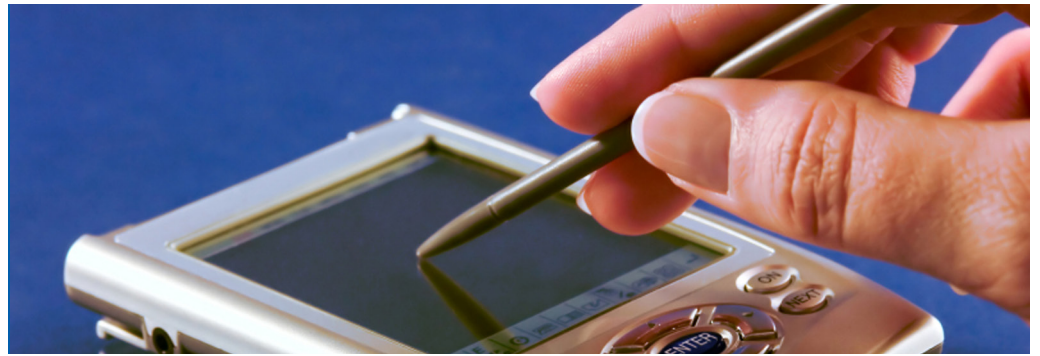


Pocket Maintenance - effective maintenance management at your finger-tips



IDHAMMAR'S POCKET MAINTENANCE SYSTEM enhances the flexibility, mobility and efficiency of maintenance engineers as they carry out inspections, or initiate and manage work orders.

Powerful software modules are available for use with a standard PDA to enable maintenance engineers to remotely access inspection schedules, capture and manage equipment feedback, record meter readings, issue work order statements and check stock availability on location. The information captured is seamlessly returned to the Idhammar MMS System directly when the device is placed in its docking station or on request through wireless connectivity.

Using Idhammar's Pocket Maintenance you can:

Accelerate response time to critical failures, immediately notifying key maintenance staff of breakdowns, and quickly reporting back completion of remedial activity to planners.

Enhance your working environment by eliminating paper from duty-rounds.

Reduced administration costs by removing the need for time-consuming transcription of inspection results from paper at the end of the round

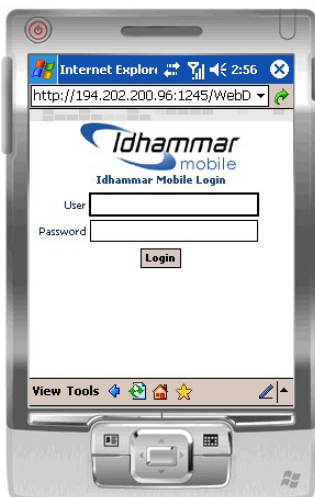
Achieve faster processing of work with inspections, work orders and stock identified, allocated and recorded in real time.

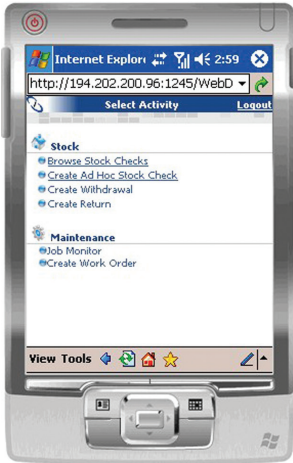
Improve accuracy of data capture as inspection, metering or work order data is entered in real-time through an intuitive user interface.

Boost both reporting and traceability of inspection activity for audits.

Inspections

Pocket Maintenance takes the place of printed plant inspection and lubrication round reports. Duty rounds are downloaded and each inspection activity or lubrication task will be displayed on the screen together with appropriate equipment descriptions and location details. Equipment condition and task completion details are simply and quickly recorded through check boxes. If a fault is discovered which requires further attention, a work order can be raised immediately through the Pocket Maintenance device.





Meter Readings

Users of meter-based planned maintenance can also use the Pocket Maintenance device to capture current meter readings which can be stored and returned later, or transmitted there and then via wireless connection.

Work Orders

The Idhammar MMS Job Monitor can identify the workload for each maintenance team and shift, or external contractors. The work orders can be exported to individual Pocket Maintenance devices as appropriate where they can then be read, acted upon, and updated on location. Each work order can be recorded and completed in real time with full details of the work entered into the device. Planned work can be easily managed with minimal written or keyboard input.

Ad-Hoc Work

As new work is identified in the plant, Pocket Maintenance is used to create a new work order. This new work can be recorded as complete or left as a request for another engineer to follow-up on a later shift.

Inventory Management

This module enables stock to be identified, located and accessed remotely. Pocket Maintenance also records stock movement and returns as they happen. Using the device for inventory management reduces the effort required for remote stock management whilst increasing the accuracy of stock-taking.

Configuration

The Pocket Maintenance module can be used with most standard PDAs; please contact Idhammar for a more detailed specification. Alternatively, hardware that is configured and preloaded with the software can be purchased directly from Idhammar Systems.

The Pocket Maintenance System can be integrated with either the Idhammar Maintenance Management System software, or with a third party CMMS, to deliver enhanced mobility, flexibility and communication for maintenance teams of all sizes.

To find out more about how Idhammar's Pocket Maintenance can contribute to your efficient maintenance management,

Call: [+44 \(0\)117 9209400](tel:+44(0)1179209400)

Email: info@idhammarsystems.com or

Visit: www.idhammarsystems.com